

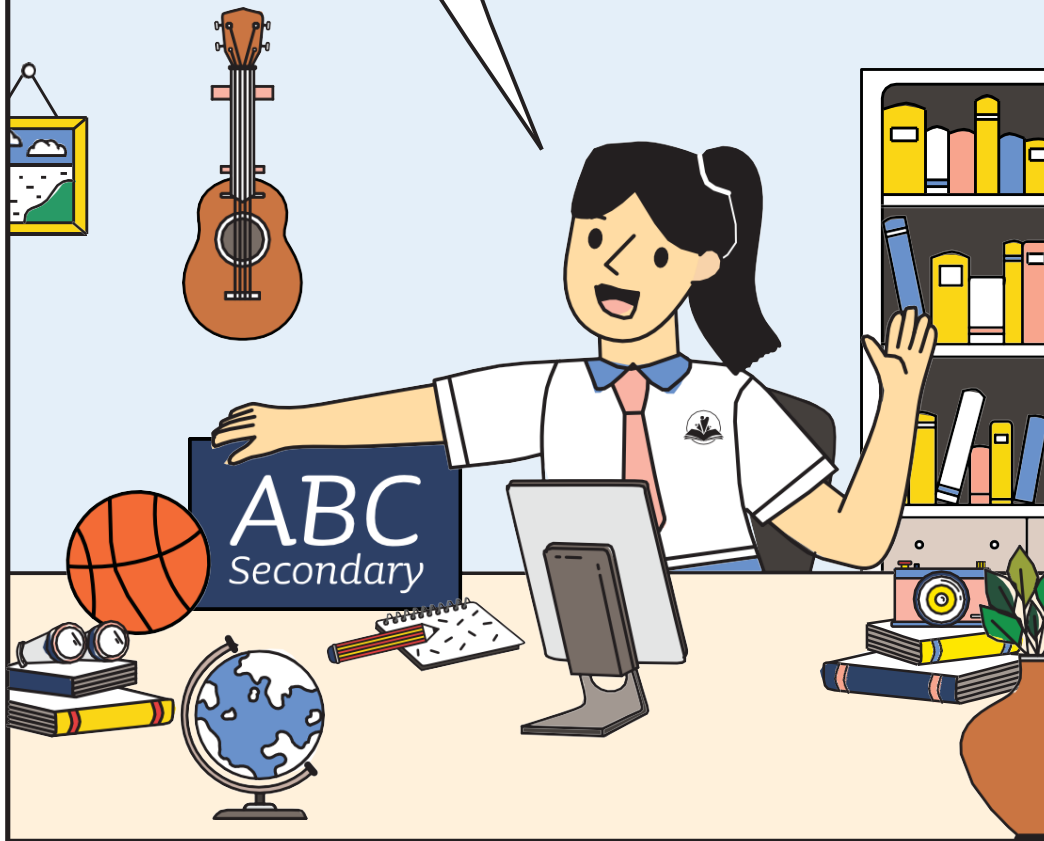


Sylvia Says



# Hi! I'm Sylvia!

It's nice to meet you! I'm excited to share with you my experience with Student-Initiated Learning, or SIL for short.



# S.I.L



as of 7 Jan 2024



# What is SIL?

As part of Home-Based Learning (HBL), you are going to embark on 'Student-Initiated Learning' or SIL for short. So what exactly is SIL?



SIL is

- ✓ an opportunity for you to learn to be an **independent, passionate and lifelong learner**
- ✓ a dedicated time during HBL for you to **explore personal interests**, both within and outside of curriculum



If you are still wondering what your SIL journey could look like, here's a sneak peek at mine!



## 01

### Getting Started

- Choose an activity from the given list in SLS.



## 02

### Embarking on your journey

- Explore, Plan and Learn!



## 03

### Sharing your Journey

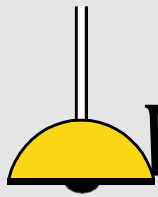
- Don't forget to share your learning journey!



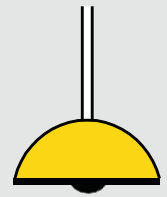
SIL is not...

- a time for you to catch up on school work
- an activity that others ask you to do
- an activity that is graded
- an activity that you need to spend a long time planning for





# What should I do for SIL?



I want to learn \_\_\_\_\_,  
by \_\_\_\_\_.

Here are some examples:



I want to learn how to cook traditional cuisine from my culture, by reading cookbooks and trying the dishes at home.



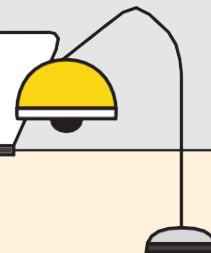
I want to learn the Korean language, by taking online language lessons.



I want to learn gardening skills, by reading gardening magazines and growing a few plants of my own.



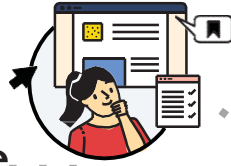
Before you start on your SIL activity, do inform your parents especially if you are suggesting your own SIL activity.



# Things to remember for SIL:

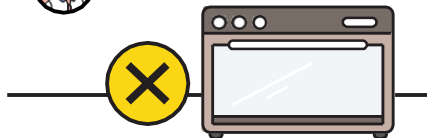
## 01

### Keep it safe



- ✓ Consider the possible risks in what you plan to do.

I haven't used an oven before, I'd better ask my mum/dad/older siblings to teach me before I use it.



## 02

### Keep it simple



- ✓ Choose a simple activity that can be done at home.
- ✓ Ensure that the materials you need are easily accessible.
- ✓ Break down a task into mini-tasks that you can progressively build up over the weeks!

Build up a task progressively over the days

Day 1

Day 2

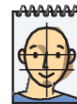
Day 3



Study different portrait drawing techniques



Experiment with a portrait drawing



Add colours, contours and background to portrait

Day 4

Day 5



Draw another portrait



Try an abstract portrait drawing

## 03

### Keep it stress-free



- ✓ Choose a topic that you enjoy!
- ✓ Have fun during the learning process and feel free to tweak your plan as you go along!



# SIL Timeline and Schedule

Term	Week	Date	Activity	Cohort involved	Remarks
1	4	23-Jan	SIL Discussion (1 period - Assembly)	Sec 1 to 5	Decide if you would like to do individual SIL or group SIL. Form your group if you would like to do group SIL.
1	4	26-Jan	Choosing of SIL activity on HBL Day	Sec 1 to 5	All students are to indicate their SIL activity and to complete Section A of the SIL SLS package by this HBL day. Choose a SIL activity from the list or propose your own SIL as individual or group. For those who are proposing their own SIL, complete the proposal and inform your parents. Only start on your SIL after getting approval from your FTs. Remember: Activity should have learning focused and be safe to carry out. Your FTs will give the approval/rejection via the SLS package latest by 23 Feb (HBL day).
1	9	26-Feb	SIL Progress Check 1	Sec 1 to 5	During this allocated time slot, you might be called by your FTs to do a quick update of your SIL progress. You should have already completed Section B of your SIL SLS Package. No submission of learning deliverable is needed by you at this point in time.
2	1	18-Mar	Submission of SIL learning deliverable	Sec 4 & 5	All are to submit your SIL deliverable and reflection via SLS by 18 March. You will be invited to do a sharing of what you have done and learnt for the SIL.
	2	26-Mar	Celebration of SIL Progress: Sharing with Peers	Sec 4 & 5	Some questions which could be asked: a. What have you learnt? Any learning difficulty? How did the you overcome? b. How is your SIL linked to the cohort theme?
2	3	1-Mar	SIL Progress Check 2	Sec 1 to 3	During this allocated time slot, you might be called by your FTs to do a quick update of your SIL progress. No submission of learning deliverable is needed by you at this point in time.
3	4	15-Jul	SIL Progress Check 3	Sec 1 to 3	During this allocated time slot, you might be called by your FTs to do a quick update of your SIL progress. No submission of learning deliverable is needed by you at this point in time.
4	2	16-Sep	SIL Progress Check 4	Sec 1 to 3	During this allocated time slot, you might be called by your FTs to do a quick update of your SIL progress. You should have already looked through Section C of your SLS package. Start reflecting on your SIL journey and think of what is the format of SIL deliverable you will be submitting.
4	6	18-Oct	Submission of SIL learning deliverable	Sec 1 to 3	All are to submit your SIL artefact and reflection via SLS by 18 Oct.

The table above shows the SIL timeline.

Take note of the weeks where you have assessments, competitions, exams.

Plan your time well.

Planning a SIL Schedule: Build up a task progressively over the days

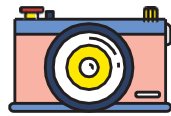
Step	Tasks	Extra Notes	To be completed by
1.			
2.			
3.			
4.			
5.			
6.			
7.			
8.			
9.			
10.			

Add more lines if you need to.

# Sharing your journey



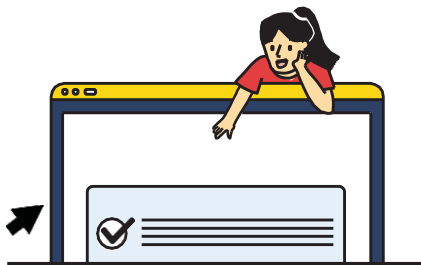
Here are some suggestions for how you can share your learning and upload onto SLS!



Snap a picture of something you created, or a moment you want to remember!



Start a learning journal!



Record your learning in PowerPoint or Google slides



Create a short video!

Digital product	Requirement	File Extension	Size Limitation
Digital Graphics	5 to 10 photos	jpg/jpeg/gif/png/svg	10 MB
Word/Google Doc/ PDF (font size 12)	3 to 6 pages	docx/pdf	10 MB
PowerPoint / Google Slides	5 to 10 slides	pptx	50 MB
Video	3 to 6 minutes	mp4/m4v/ogv/avi/mov/mpg/mpeg/wmv	500 MB



## How do I submit my learning?

Before submission, check for the following:		Check
1.	Did I introduce myself? "I am Sylvia Gan from 1C."	<input type="checkbox"/>
2.	Did I explain why I chose the SIL activity? "I chose this SIL activity because ..."	<input type="checkbox"/>
3.	Did I share how and what I have learnt clearly?	<input type="checkbox"/>
4.	Did I use any offensive language?	<input type="checkbox"/>
5.	Did I put on school-related attire in my sharing, if any?	<input type="checkbox"/>
6.	Did I present myself appropriately?	<input type="checkbox"/>

**General guidelines:**

Your appearance must be respectful towards people, the school and the public.

The contents must also be appropriate for school context. There should be no glorification of violence, religion, sexuality and drugs, but not limited to these.

Once you have checked for the above,

1. Name your file in the following format:

**Class\_Register Number\_Name\_Title**

e.g. 1C\_06\_Sylvia Gan\_Calligraphy

2. Upload your file onto the SLS.



**Refer to common FAQ for more information.**



# FAQs



Answering some of your questions on SIL.



Hey Sylvia, my friends and I love playing online games together. Are we able to use SIL time for this?

Felicia

Hmm I don't think that's a good idea, Felicia. SIL is intended for you to learn something that you're interested in. Why not make use of this opportunity to explore something new?



Hi Sylvia, I was wondering if I could do my SIL activity with my classmates?

Ganesh

Hi Ganesh, No. For this SIL, due to the current Covid-19 situation, it's better that we do individual learning.



Hey Sylvia, do I need to seek approval from my teachers and my parents before I embark on my SIL activities?

Yi Ting

Hi Yi Ting, for SIL activities that are carried out at home or in school, you should keep your parents informed about what you are planning to do.



Hey Sylvia, I'm considering learning more about Singaporean artists at the National Gallery. Can I venture out of my home or school for my SIL activities?



Ethan

Hi Ethan, as a rule of thumb, you should choose activities that can be done at home or in school.







# FAQs



Hi Sylvia, there are so many ways to share my SIL learning. How should I decide?



Christopher

Hi Christopher! Remember, keep it simple! Your sharing shouldn't become a burden or take up a lot of time. Your sharing should also be fun, so you can choose a mode of sharing that you enjoy and upload onto SLS.



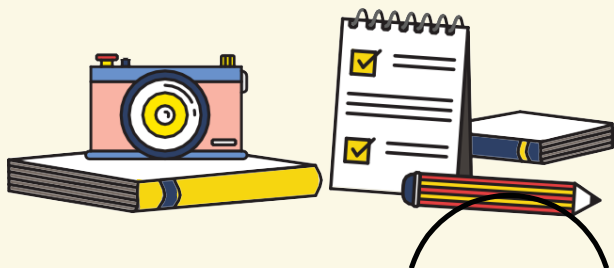
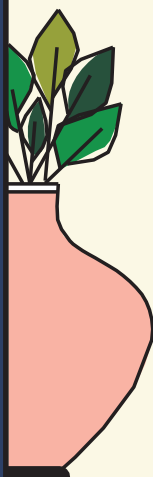
Hi Sylvia, how much do I need to share about what I've learnt with my peers, as I'm still a beginner. I'm worried that I will make a fool of myself.



Afiqah



Don't worry Afiqah, it's not necessary to perform or to showcase your new skillset. You should just share as much as you're comfortable with. For example, you can share with your teachers what you have read or videos you watched as part of your SIL learning.



## Common FAQ

### **1. What activities can I do for my SIL?**

You can choose to do activities that are curated by the school or come up with activities which you are really interested. These activities can be related to the subjects you are learning in school. For example, a topic like Food Waste Recycling, you want to find out more.

The important considerations are:

- a. Is the activity something you enjoy doing and learning?
- b. Is the activity safe?
- c. Is there learning taking place from this activity?

### **2. Must my SIL activity be an extended activity over a year? Can I change my SIL activity after a few weeks? Do I need to inform my form teachers?**

No, your SIL activity does not need to be an extended activity over a year. You can choose to pursue a once-off activity such as learning how to bake on HBL days, before moving on to other activities.

For Sec 1 to 3, there are around total of 14 HBL days while for Sec 4 and 5, there a total of around 3 HBL days for you to do and complete your SIL activity. Spend around an hour on each HBL day for your chosen activity/activities.

If you would like to change your SIL activity after a few weeks, you can just provide the updates during the SLS progress check session and reflect what is this new activity when you submit your final reflection in SLS.

### 3. Based on the SIL SLS package, how many sections do I have to complete?

There are 3 sections in SLS package:

#### Section A (PLAN) – Decide your SIL [All are to complete.]

- (i) Deciding which SIL activity to do [All are to complete.]
- (ii) I am / My group is proposing my own SIL activity [Only for those who decide to choose your own SIL.]

#### Section B (LEARN) – Planning your timeline. Start Your Learning, Chart Your Progress [All are to complete to help you with your planning.]

A brief timeline for you to plan your stages of SIL.

For Upper Secondary students, we believe that you would be very familiar with planning your own timeline for SIL. Thus, this section is not compulsory for all to complete. But you are encouraged to complete it to guide your planning.

#### Section C (REFLECT) – Reflect on the process and Upload your learning deliverable [All are to complete.]

- (i) Upload your learning deliverable [Individual submission / One member from each group.]
- (ii) Reflecting on your SIL journey [All are to complete.]

### 4. Must I seek approval from my teachers and my parents before I embark on my SIL activity?

For activities which are not curated by school, you can only start your SIL activity after your form teachers have looked through your proposal and have approved your proposal.

Do inform your parents on your planned SIL activity so that they are aware of what you would like to learn and provide you the guidance where necessary.

### 5. What happens if my/our proposal is rejected by our form teachers?

Find out the reason why it has been rejected. It might be because your suggested activity does not have any form of learning and / not safe to be carried out.

You can resubmit your proposal again under Section A of the SLS package.

## 6. Can I do my SIL activity with my classmates?

Yes, you can! You can do your SIL activity with your classmates in groups of 4 or 5. This is provided that they are also interested in the same SIL activity as you.

For example, you and your classmates may be interested in planning a food waste recycling event in school.

If you are doing group SIL, you are to provide the names of your group mates in SLS as seen below.

### Q1

If you are doing a **group** SIL, key in your **group members' names**

If you are doing your own **individual** SIL, key in "**NIL**" below.

Group members

- 1.
- 2.
- 

## 7. Must everyone in the group submit their own proposal?

Proposal submission is only for students who choose to propose their own SIL activity instead of choosing from the school's proposed list.

Only one member from each group has to represent the group to submit their proposal.

**My proposed SIL / my group proposed SIL activity is...**  
(Please tell us what is your SIL activity about. It should be **lea**  
You **need to inform your parents** what you intend to do for

**My proposed SIL activity is...**

**8. Is it compulsory to record what I have learnt? What “evidence of learning” must I produce?**

You are to capture what you have learnt for your own personal reference and to help you share your learning. These learning should be uploaded to the SLS (*unless your form teacher has given you a different instruction*) by the deadline given. It should be a stress-free process – for example, you can record and share your learning by creating a short video or taking a photograph.

If you are doing a group SIL, each group will only need one representative to submit what the group has learnt.

Do take note of the restrictions (e.g file size limit) in SLS.

Below is a list of formats you can use to upload your file:

Digital product	Requirement	File Extension
Powerpoint / Google Slides	5 to 8 slides	pptx
Word / Google Doc / pdf	3 to 6 pages	docx/pdf
Video	3 to 6 minutes	mp4/m4v/ogg avi/mov/mpc

**9. If I am doing group SIL, must every member of the group submit their reflection on their SIL journey?**

Yes, if you are doing group SIL, each member will need to submit their individual reflection as reflection is very unique to individual.

**10. Can I opt out of sharing of my learning to my classmates?**

As part of learning, it is important for us to build confidence and develop our communication skills. Thus, you are strongly encouraged to share your learning if you have been chosen by your teacher. It is not necessary for you to perform or to showcase your new skill set.

Most importantly, is to celebrate your learning together with the class by sharing your SIL journey – what are some of your key takeaways based on what you have learnt and how your SIL journey is linked to the contextual theme of the cohort.